




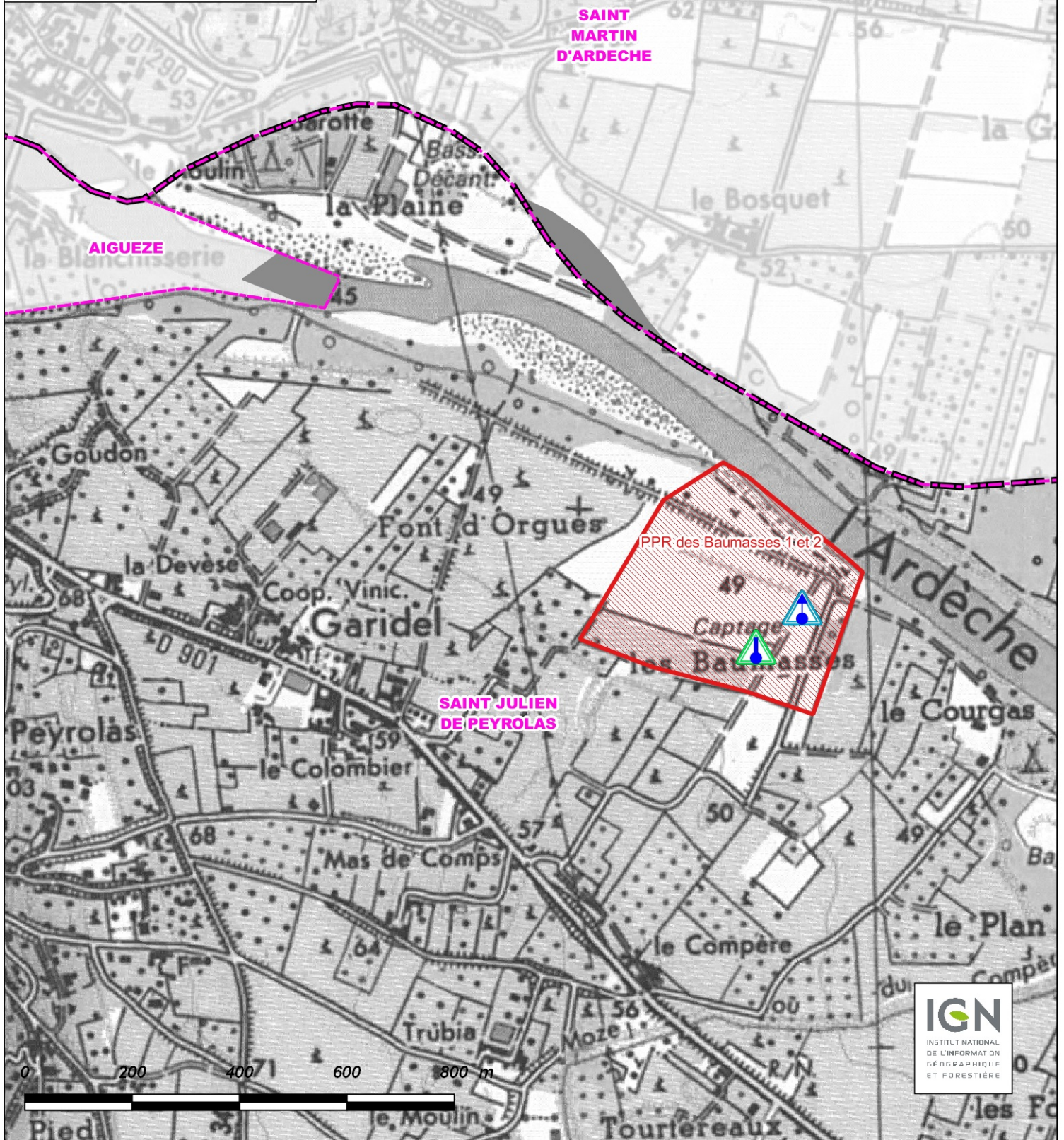
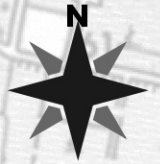


Légende :

-  Limites communales
-  Limite Departementale
-  Puits Baumasses 1
-  Futur Forage des Baumasses 2
-  Périmètre de Protection Rapprochée (PPR)



Département du Gard
Commune de SAINT JULIEN DE PEYROLAS

DUP	B	échelle 1/10 000
Octobre 2016		Plan N° 08.2

Dossier d'Utilité Publique - Champ captant des Baumasses
Zoom du tracé du PPR sur topographie IGN